



Welcome to



**Nordic Pulse**  
**GPS** Live Grooming App

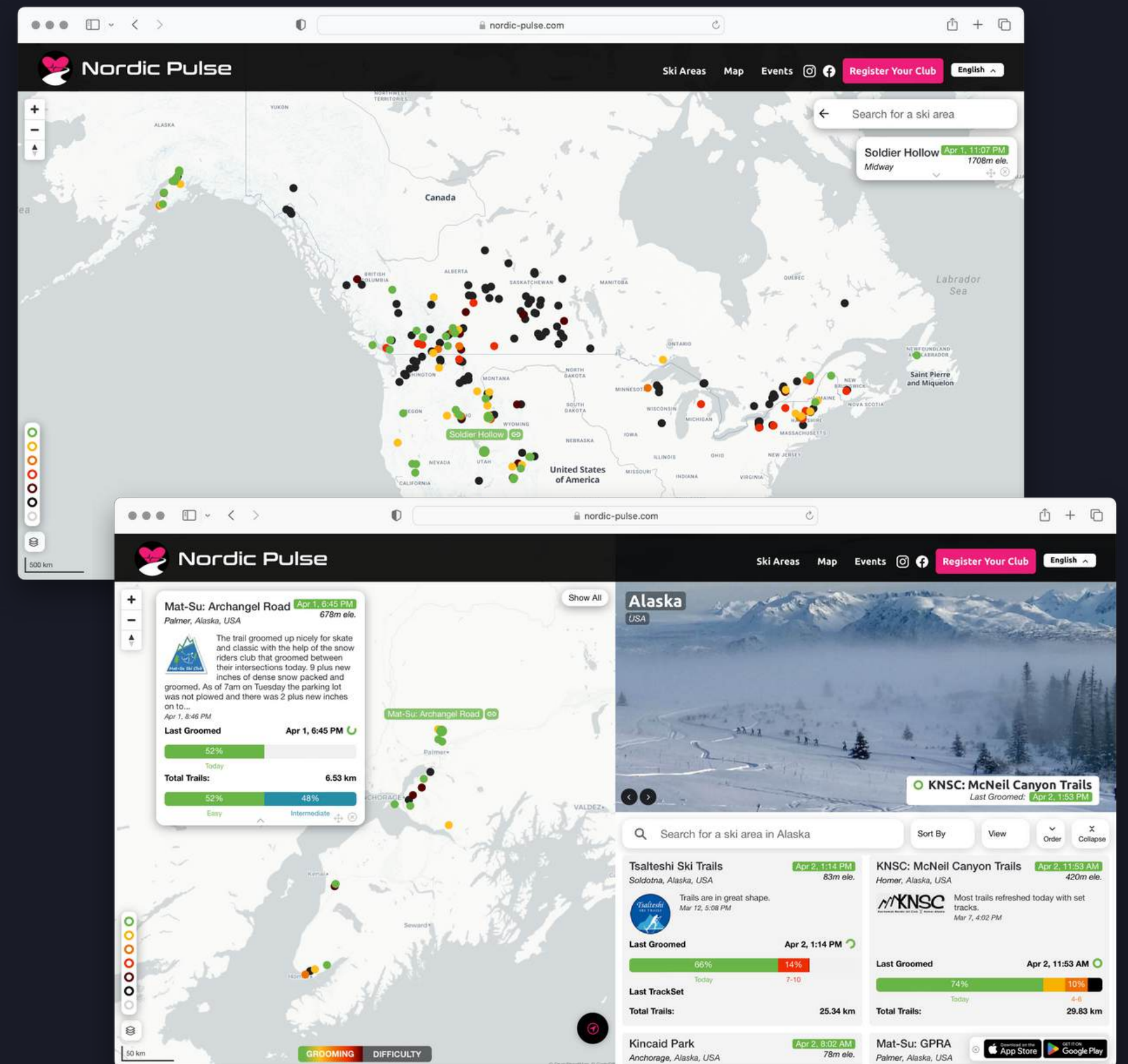
*Photo credit: Graham Hurst*

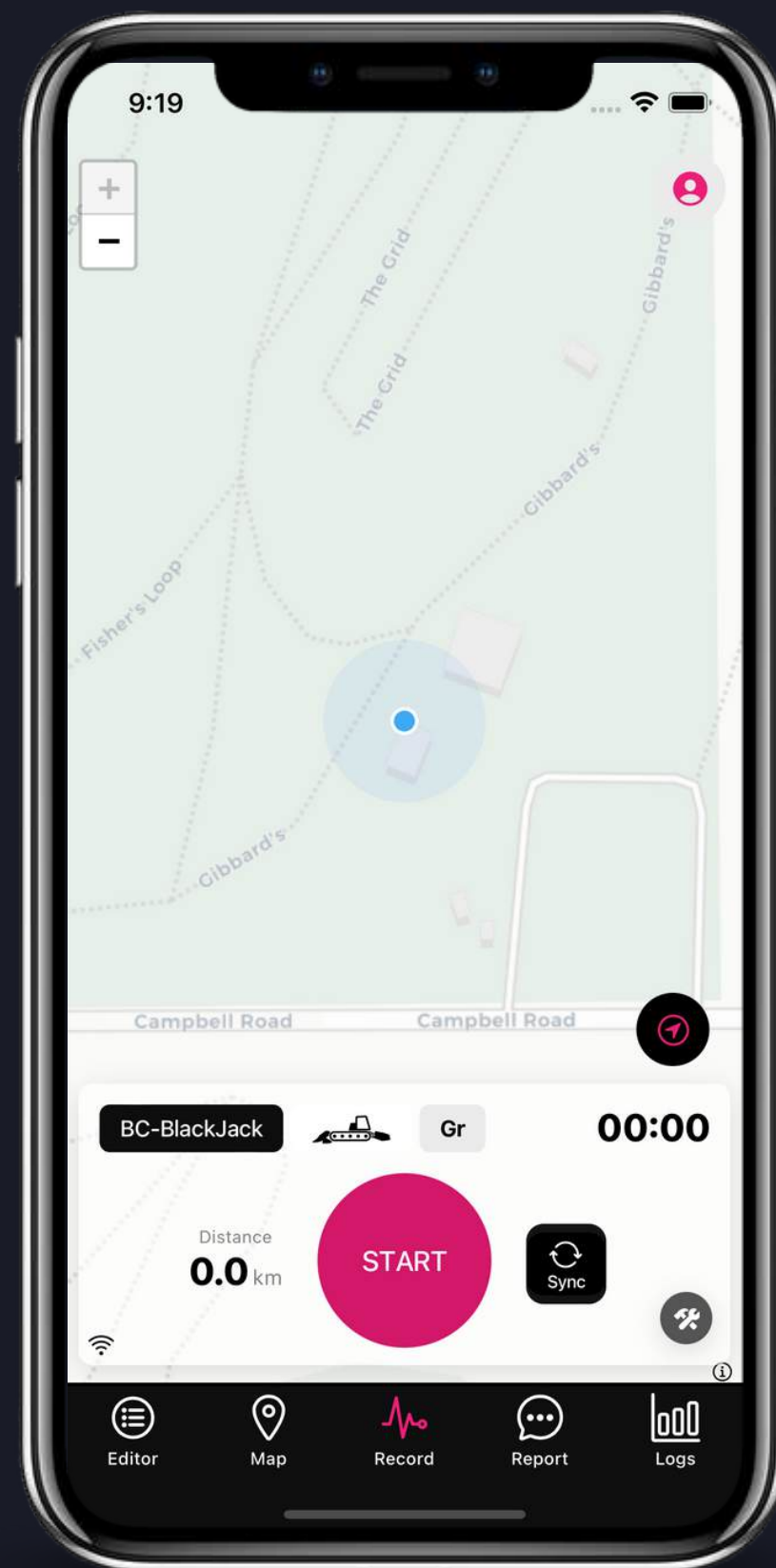
# Connecting **ski areas** and **skiers**

Nordic Pulse was born out of a desire to help skiers find trail conditions and to help clubs share their grooming reports.

We believe strongly that deciding where and when to ski should be a quick, easy, and fun experience.

After years of wading through outdated websites, online spreadsheets, snow phones (though we do love a good snow phone message!), user-reported blogs, and the like; it was time to create a new platform.





**APP BASED**

## GPS Live Grooming

Nordic Pulse is an app-based cross-country ski trail grooming report system, bringing trail condition reports from ski areas together on one platform, and streamlining grooming reporting for ski areas.

From the beginning, Nordic Pulse has been developed alongside groomers, ski area staff and skiers to create a simple, straightforward system. We are proud to be working with the largest ski areas in North America and France, as well as many small clubs. From full-time machine operators to local club volunteers, Nordic Pulse is a game changer for the cross country skiing community.

**BUILT FOR**

**Groomers, Skiers & Ski Area Admins**

iOS / Android

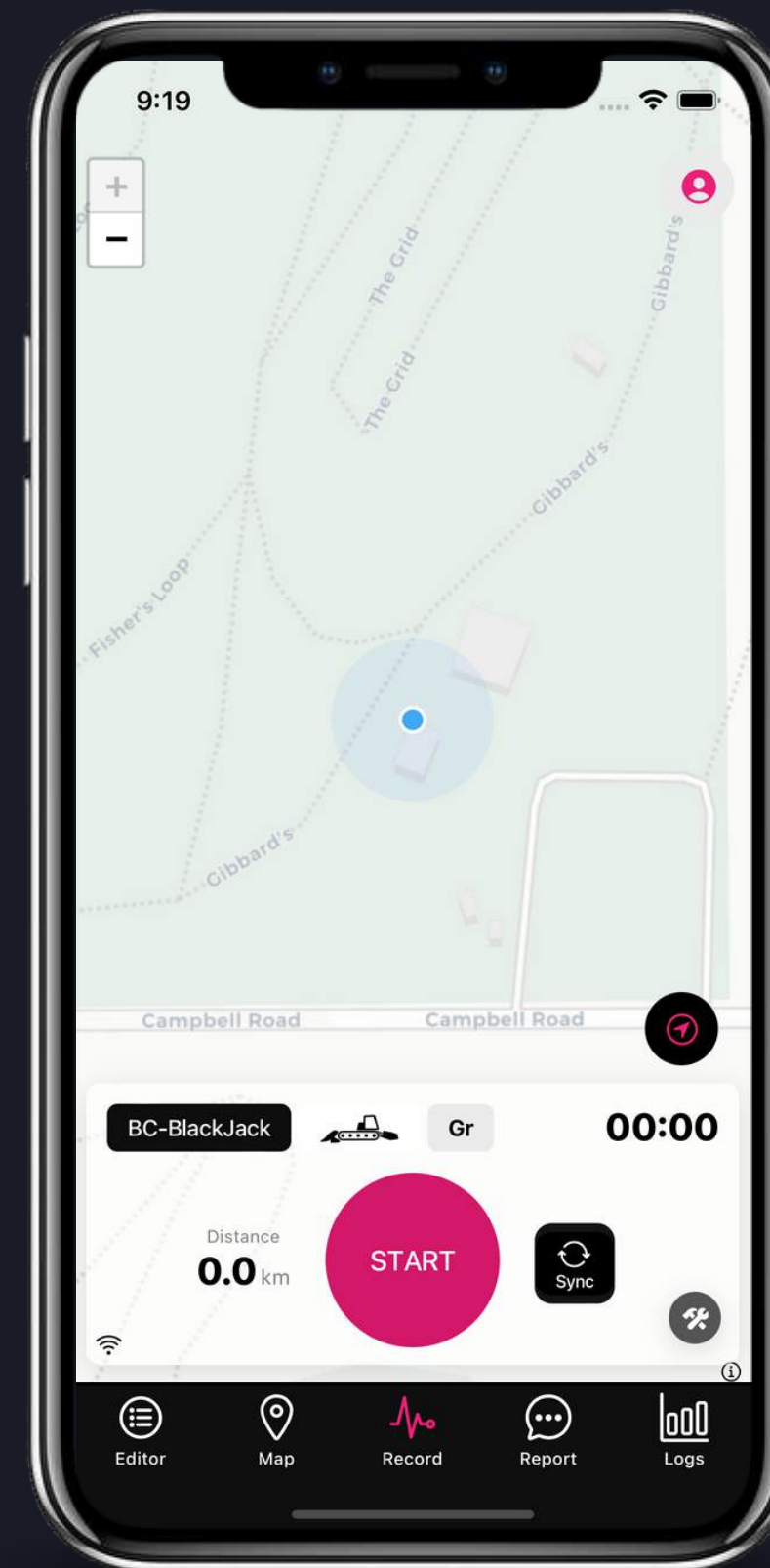


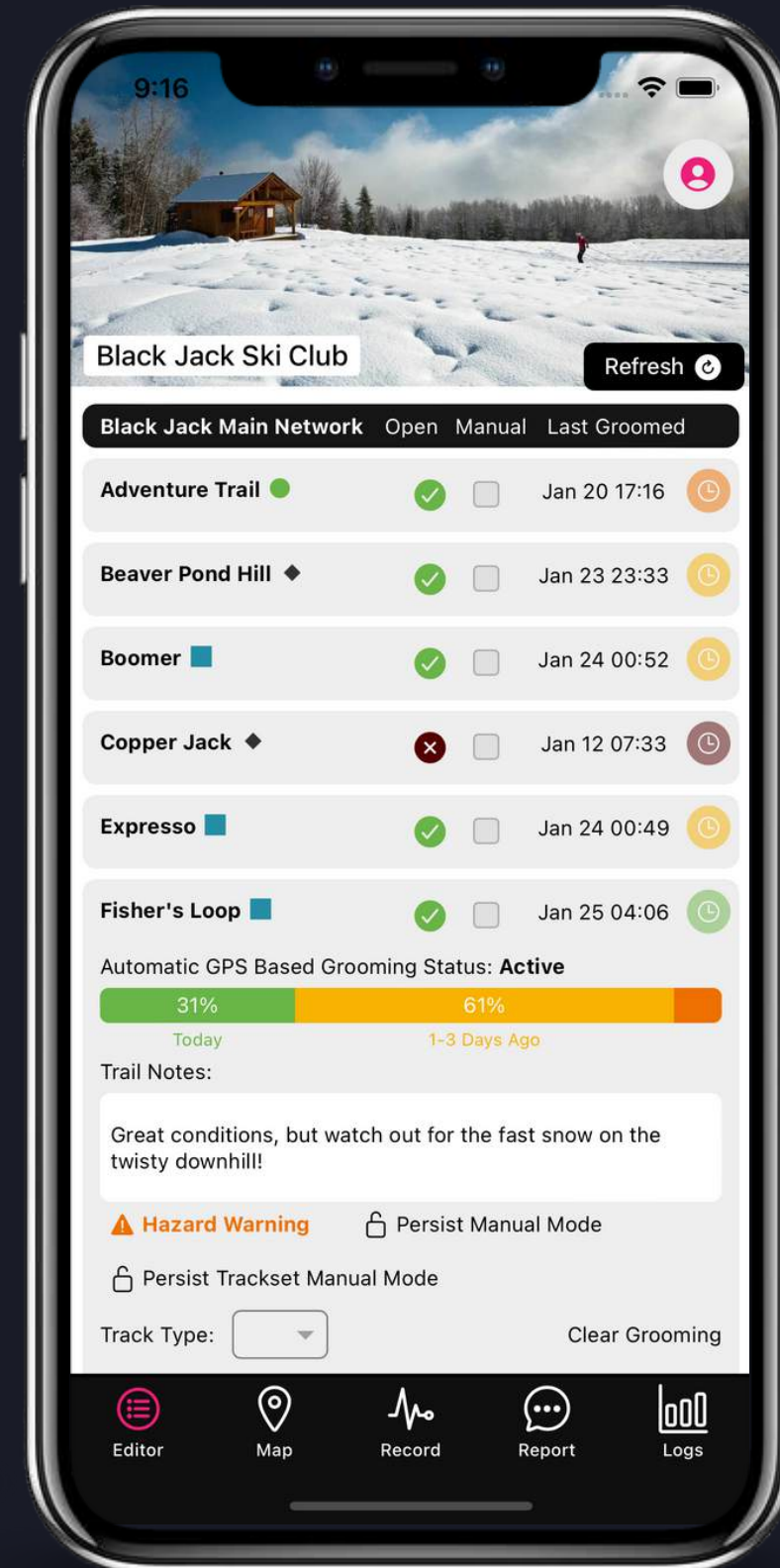
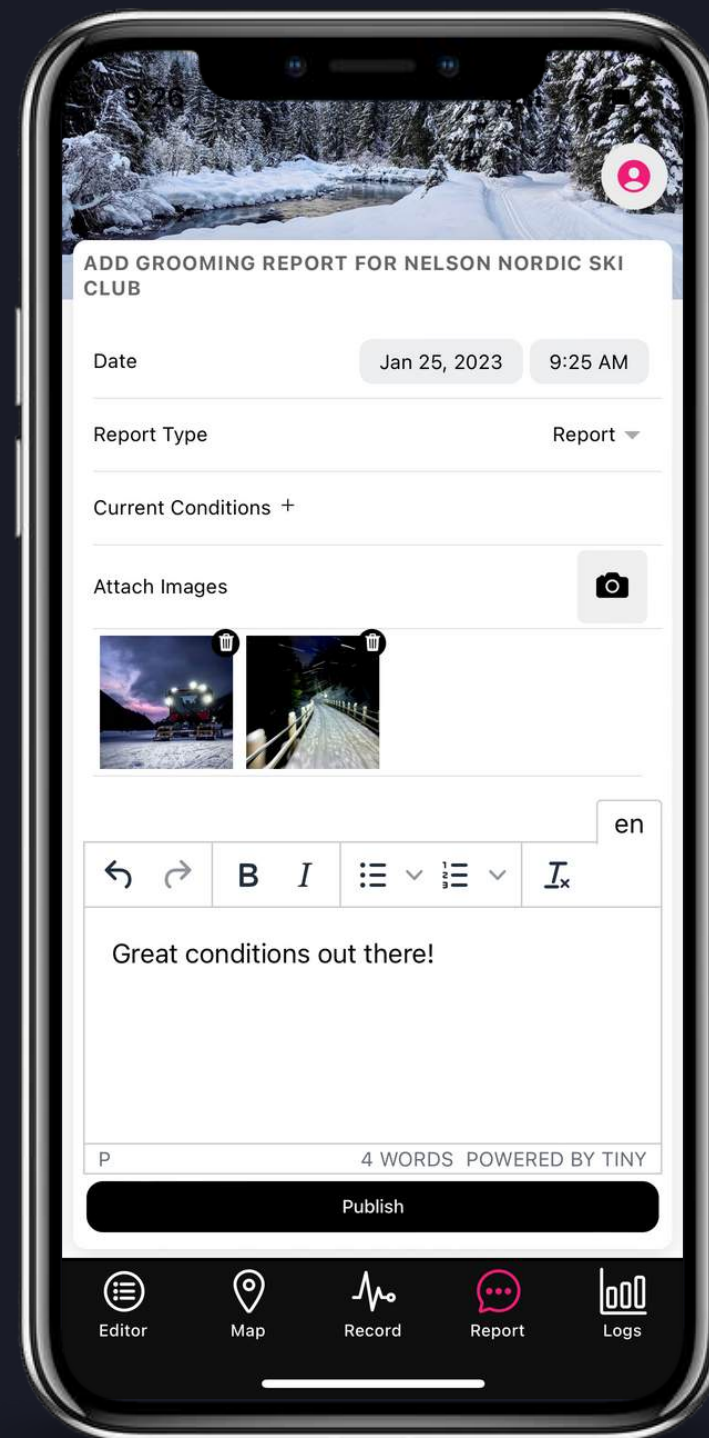
## Follow grooming operations live

With LiveTracking features, grooming crews simply activate the GPS tracker built into our iOS and Android mobile apps during trail preparation and our app syncs the data with our server every few seconds. Maps and trail listings are updated in real-time.

## Offline recording

Record offline with the app and sync the data after returning to reception. All grooming dates/times are backdated to when the trails were actually groomed (based on the gps data recording times) and results are visible within minutes of syncing the data.





## Manual controls

### Easy to update trail status

As needed, manually adjusted trail details and timestamps overrides work in unison with the GPS system. Adjust the status of trails, add hazard warnings and detailed trail notes from our trail editor.

## Written reports and photo upload

Share a commentary and upload images of today's conditions to add context to the map and reports for your skiers.

## Join the Nordic Pulse **Community**.

“ I love the app and all the feedback from the Nordic community that I hear is **overwhelmingly positive**.

I truly think this app has been a **real game changer**. In years past we've struggled with a myriad of different issues, including internet connectivity, network/server errors, mapping systems to help new operators who are learning the trails. This app addresses so many issues and is helpful in so many ways.

At first, I wasn't pumped about being tracked on the Mountain, but it's **proven itself invaluable countless times**. Our radios up here are wholly inadequate and more often than not, our night shift road operators have tried to radio me, but I can't be reached, or the transmissions are garbled, at least with this app they can determine whether I'm still moving or am stopped and may need to send help.

Also, I love the ability to access the app from anywhere and adapt to changing conditions or update stuff I may have forgotten. A perfect example of this: after my shift a few times the road was dangerously slick coming off the Mountain, and with this app, I was able to log back on and edit my grooming report to include potential road hazards.

It's a **tremendously valuable app from an operator standpoint**. I think above all other things, this app has saved me probably 30–40 minutes a night, which allows me to get even more trails done and get a better product for the skiers.

**Joe Nelson, aka Capt. Ginge**  
Lead Groomer, Mount Spokane State Park



# API Integration

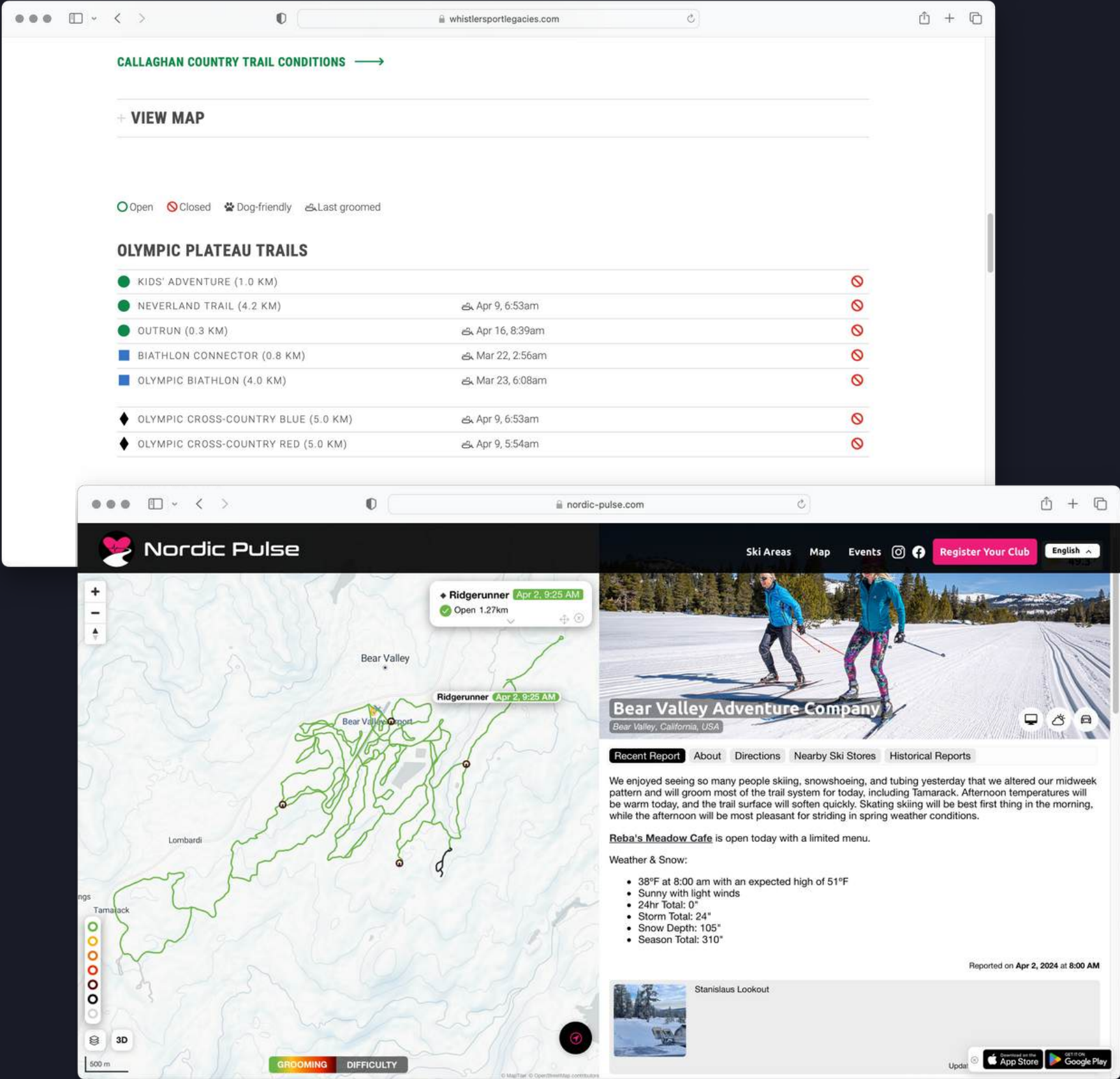
Integrate to existing systems and bring your communication channels together via our fully featured API and drop-in embeds to sync grooming data directly with existing websites and mobiles apps.

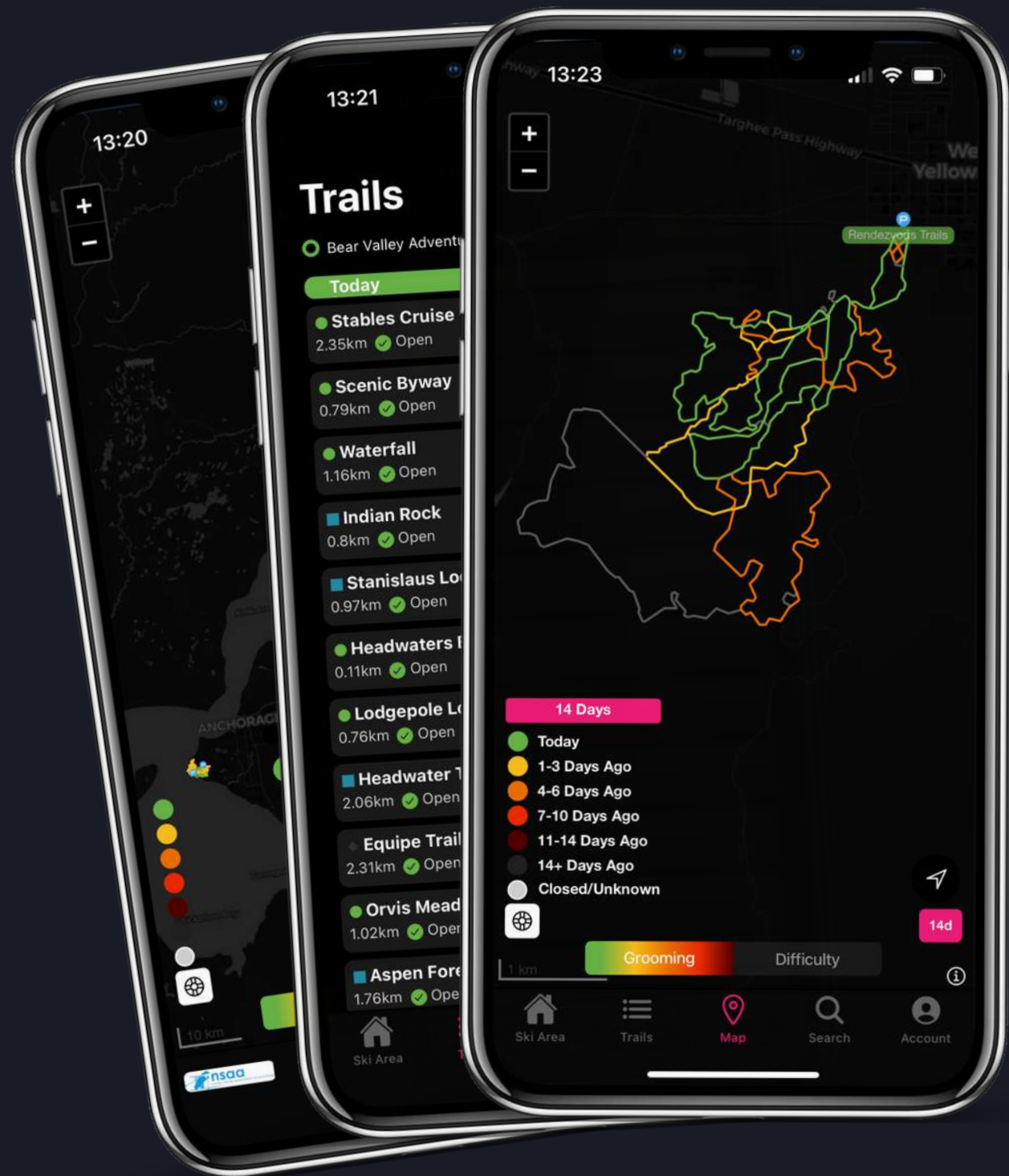
Our API meets industry standards and offers full access to trail status, aggregated grooming details, written grooming reports and daily photo uploads. Custom integrations are also available.

# Trail Report Page

Each ski area have their own customized page on nordic-pulse.com. Skiers can easily access grooming information, trail reports and interactive maps.

Groomer’s progress results in real-time updates of the grooming status, indicating which trails were maintained that day. Skiers can use the map and reports to easily plan their ski routes.





## Nordic Pulse **Skier App**

Nordic Pulse Skier App was created specifically for cross country skiers.

Easily search and favourite your local ski area, access trail details with status, last groomed info, distance, dog friendly and more.

Check regional views to find nearby conditions, maps, and grooming summaries. Follow Live-Track + Geolocation to help navigate your trails, and access written reports, webcams and weather information on the ski area dashboards.

With a long list of additional features in development, including xc ski trail directions, push notifications when your favourite networks are groomed, offline maps, and much more, Nordic Pulse is a fully loaded, cross country skiing app.





# How does **Nordic Pulse** work?

## 1) Record grooming data.

Choose between Nordic Pulse Grooming App (iOS and Android), hardware GPS units\* or satellite tracking devices. Grooming teams simply enable the in-app GPS tracker while they groom and the app syncs the data to our server every few seconds. Access your ski area dashboard, manage your grooming teams and devices, edit trails information and written reports from the web admin console.

\*Quick and easy to hardwire into grooming machines, the hardware units devices send GPS data whenever the machines are moving – no action needed from groomers.



**Grooming App**



**Hardware + Satellite Tracking**



**Admin console**

With both AutoSync and offline storage capacity, Nordic Pulse is optimized to work in a variety of scenarios such as sending real-time data through cellular data, bulk uploading whenever the snowcat passes through a WiFi area, or operating fully offline and out of service.



**Server and Data Processing**

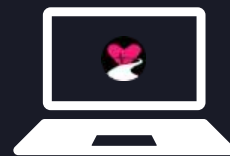
# How does **Nordic Pulse** work?

## 2) And easily access trail information.

As the data syncs to the cloud, our algorithm accurately processes the GPS data points, marking each trail with the precise date and time that it was last groomed. Once a trail has been marked as groomed, the timestamp will continue to update each time the groomer passes over it again.

At the end of the grooming shift, written reports can be publishes through our in-app reporting tools and/or our admin console (web).

For ski areas who are working off-line or out of service, groomers can simply return to a wifi, cellular or satellite connection, press Sync, and the trails will be marked at the time they were actually groomed.



**nordic-pulse.com**



**API Integration and drop-in embeds**



**Skier App**

Skiers can visit Nordic-Pulse.com, integrated club and ski area websites and the Nordic Pulse app for skiers (beta) to easily access grooming reports and interact with trail maps. Deciding where and when to ski becomes a quick, easy, and fun experience.

# Meet the **team**

Designed for **skiers**, by skiers



**Julien Locke**

**Founder, Developer**  
Nelson, BC  
Canada



**Trevor Pace**

**Developer**  
Halifax, NS  
Canada



**Alexis Grellet**

**Outreach + Support**  
Nelson, BC  
Canada



**Caroline Rey**

**Outreach + Support**  
Traunstein, BY  
Deutschland



# Grooming App Features

Nordic Pulse **Grooming App** iOS/Android



GPS Groomer Tracking  
and automatic trail reporting



Grooming Logs  
and grooming analytics



Offline/out-of-service, Wifi,  
LTE and 3G support



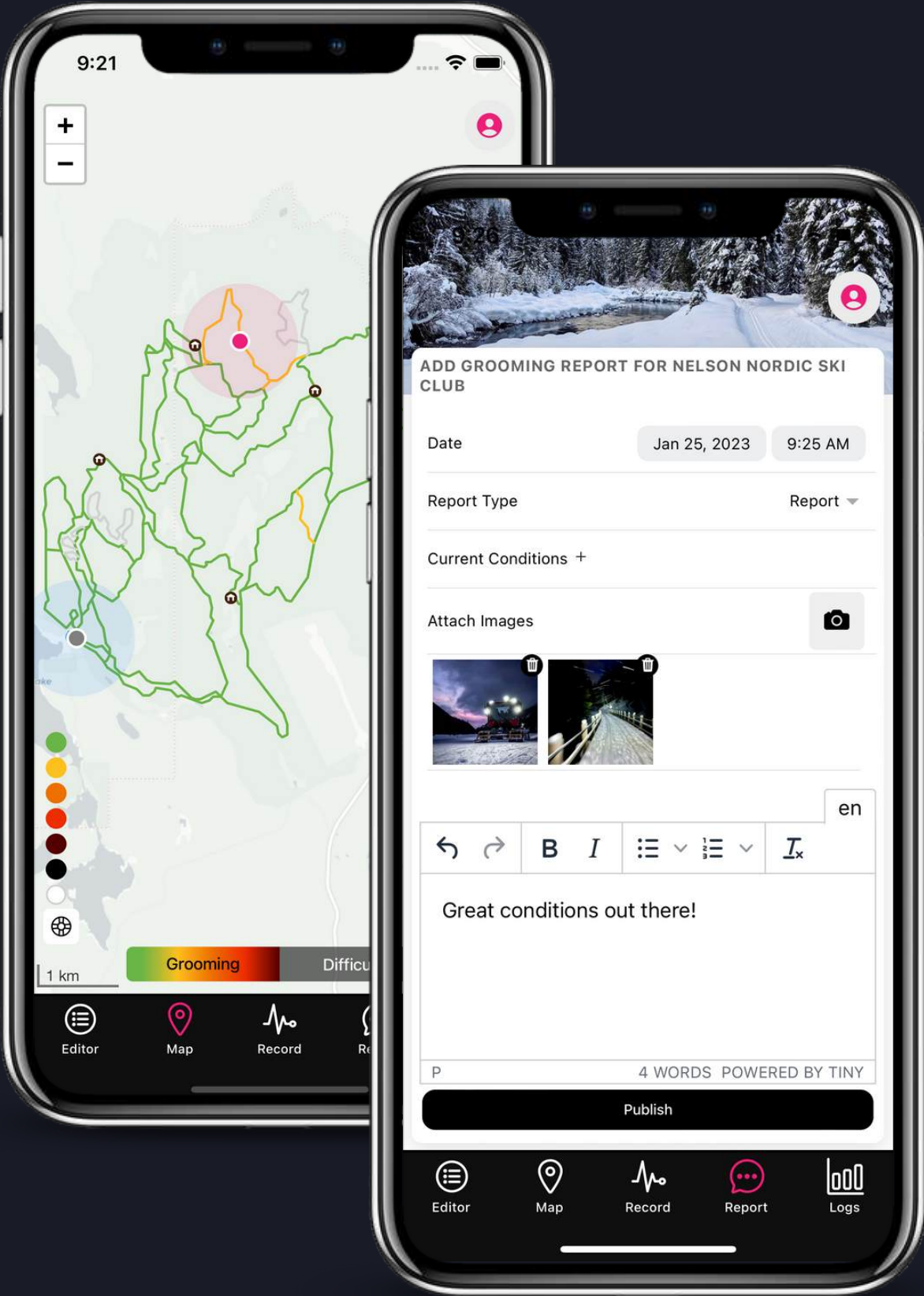
Detailed manual inputs  
and trail notes



In-App written reports  
and daily grooming images





Unlimited # of authorized  
groomers/devices




# Admin Console Features


admin.nordic-pulse.com


 Editor your trail status, notes, warning and more

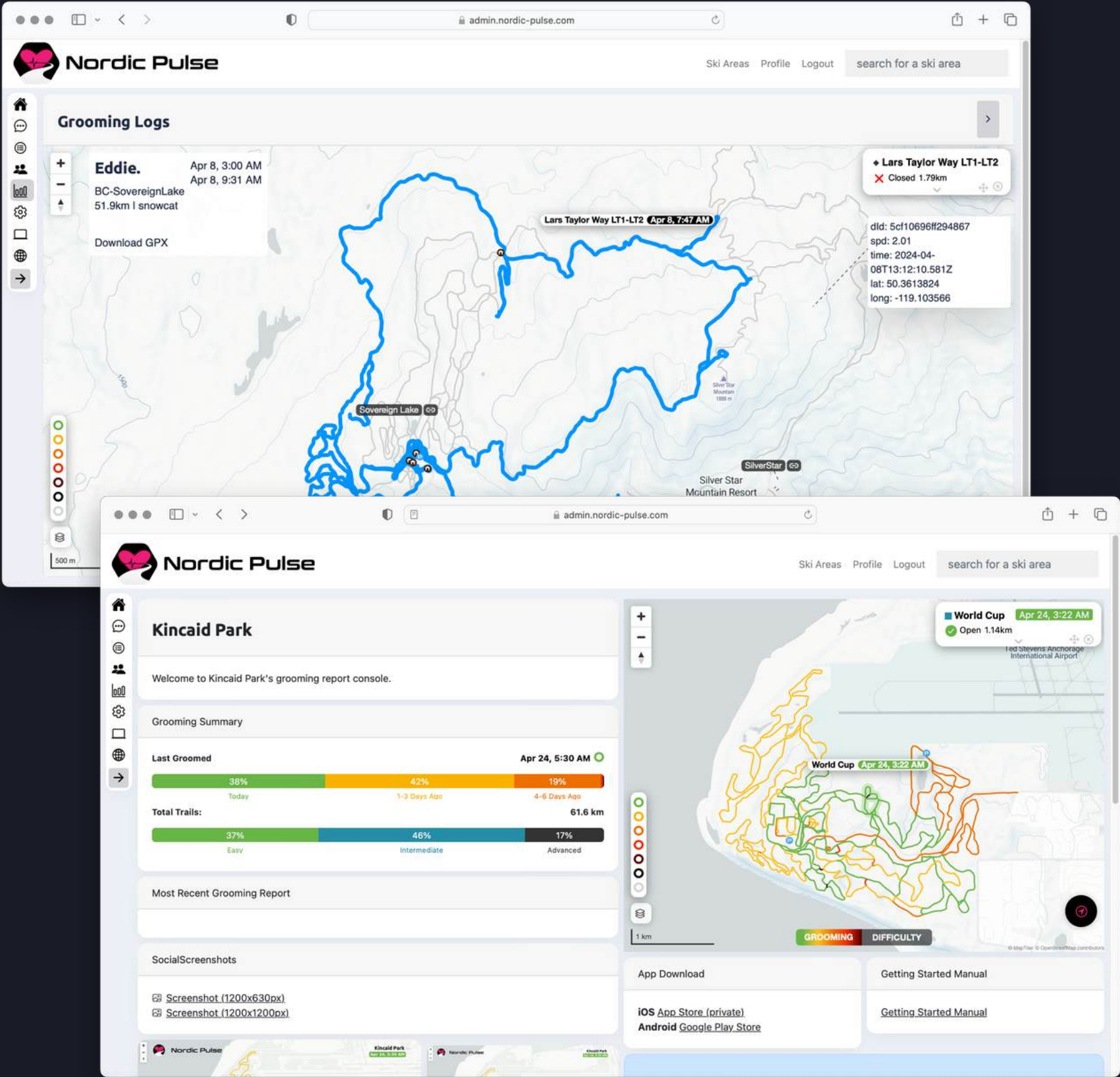
 Authorize groomers and devices

 Write grooming reports, control manual updates

 View grooming logs and summaries

 Access presets iFrames embeds, and API Docs

 More advanced analytics features in development





# Website Features

nordic-pulse.com



Realtime trail grooming maps and reports



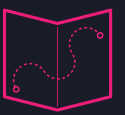
Provincial, regional and local area maps



LiveTrack machine location sharing



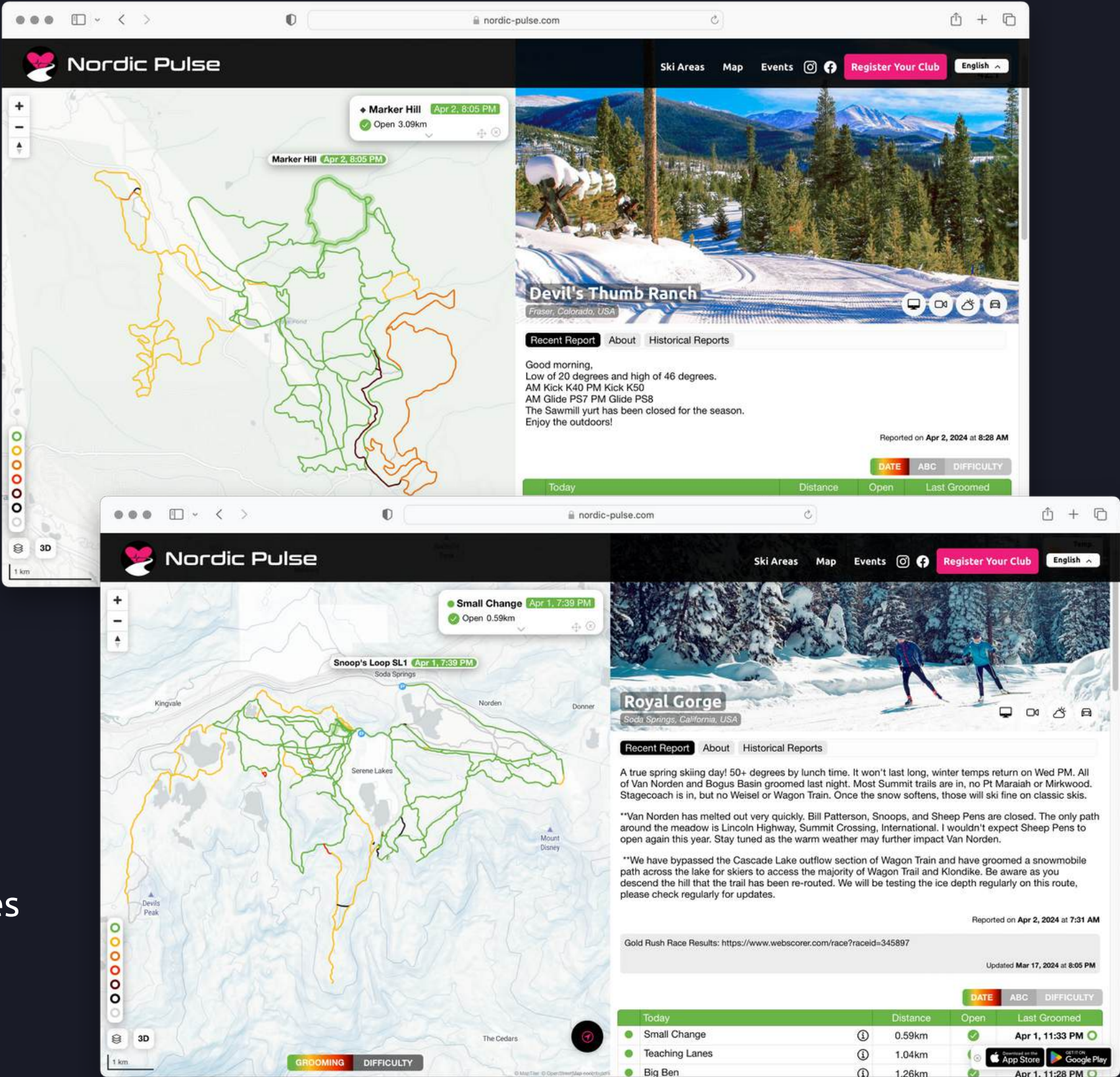
Supports Trails and Courses/Routes/Loops



Interactive trail maps with Live Grooming and Difficulty



Event pages with featured races, maps and course profiles







## Nordic Pulse is taking the XC Skiing community **by storm**

“ For years we have struggled with updating phone messages, websites and various social media platforms, to let our skiers know the trail conditions.

Thank you Nordic Pulse, for your expertise and efforts, in making this service available.

***Dirk Van Wijk - Nakkertok Nordic**, 2010, 2018 and 2022 Olympic Course Preparation and Grooming.*



# Explore

We invite you to check out Nordic Pulse!

[nordic-pulse.com](https://nordic-pulse.com)

 [instagram.com/nordicpulseinc](https://www.instagram.com/nordicpulseinc)

 [facebook.com/nordicpulse](https://www.facebook.com/nordicpulse)

## Get in Touch

778 774-2501 (Canada)

509 703-5711 (USA)

[info@nordic-pulse.com](mailto:info@nordic-pulse.com)



*Photo credit: Graham Hurst*